



**FFA**  
PACIFIC ISLANDS  
FORUM FISHERIES  
AGENCY

# IUU Fishing - FFA Perspective

---

## Workshop

Strengthening Shared Understanding Among the Partners in the Blue Pacific and Pacific Islands - Illegal, Unreported and Unregulated Fishing (IUUF) and Maritime Domain Awareness (MDA)

24 – 26 January 2023, DKI APCSS, Honolulu, Hawaii

# Scope

- ❑ FFA Overview
- ❑ Pacific Tuna Fishery
- ❑ Impacts of IUU fishing in the Pacific
- ❑ Responses to IUU fishing
- ❑ Cooperative Arrangements to combat IUU fishing
- ❑ Regional Fisheries Surveillance Operations
- ❑ Successes, Challenges and Opportunities for enhanced regional cooperation to combat threats to IUU

# FFA Overview

- ❑ Established in **1979**
- ❑ **17 Members<sup>1</sup>**
- ❑ **Governance** - Forum Fisheries Committee (FFC) meeting at Ministerial and Officials levels. Report to Pacific Islands Forum Leaders
- ❑ **FFA** - FFC, FFA Secretariat and FFA Members



**1. Member Countries & Territories:** Australia, Cook Islands, Federated States of Micronesia, Fiji, Kiribati, Marshall Islands, Nauru, New Zealand, Niue, Palau, Papua New Guinea, Samoa, Solomon Islands, Tokelau, Tonga, Tuvalu and Vanuatu

# Our Vision & Mission

❑ **Vision** - Our **PEOPLE** enjoy the greatest possible social and economic benefits from the sustainable use of offshore fisheries resources

❑ **Mission** – **EMPOWERMENT OF FFA MEMBERS**

## **Key Focus Areas:**

- ❑ Maximise economic returns
- ❑ Enhance social benefits
- ❑ Combat Illegal Unreported and Unregulated fishing
- ❑ Extend regional solidarity



❑ **Cornerstone of FFA's success is COOPERATION**

# Pacific Tuna Fisheries



**17**  
EEZs

Approximately  
**30,569,000 km<sup>2</sup>**

**55%**  
in 2020

of the world's tuna  
originated from the  
WCPO

**\$500**  
million

in access fees for  
FFA Members

**\$900**  
million

in export earnings for  
FFA Members

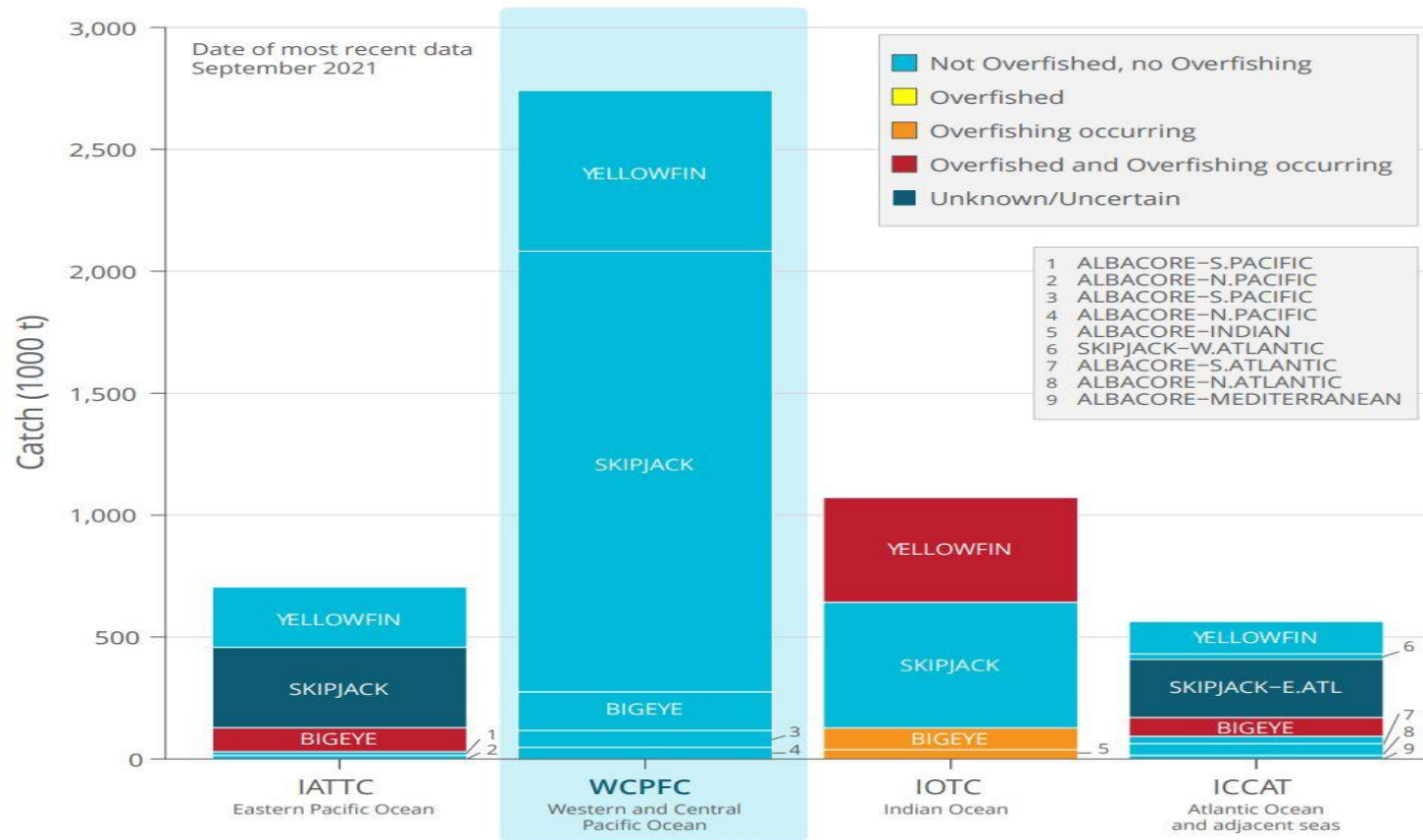
## LEGEND

● FFA Member Countries and Territories

— Exclusive Economic Zones (EEZ) (200m)

● Other Pacific Island EEZ's

— WCPCF Boundary



# IUU Fishing in the Pacific

## Quantification of IUU Fishing in Pacific Tuna Fishery study (pub. 2016 updated in 2021)

Total annual **volume** and **value** of product harvested or transhipped involving IUU activity in Pacific tuna fisheries:

- ❑ 2016 Best estimates – total annual volume of **306,440t** with a estimate value of **\$616.11M**
- ❑ 2021 Best estimates – total annual volume of **192,186t** with a estimated value of **\$333.49M**
- ❑ Main reduction driven by changes in information base – some better, some different



# Main Messages & Priorities

- ❑ Significant reduction in IUU estimates since 2016 is positive.
- ❑ **Cooperation works** - Cooperative regional MCS measures have impacted on nature and scale of IUU.
- ❑ IUU estimates continue to be dominated by **authorised or licensed fleet** who engage in unreported fishing.
- ❑ Unlicensed fishing remains an issue at the margins.
- ❑ Estimates of illegal transshipping gone down - but monitoring and control is a work in progress such as strengthening validation of transshipment volume.
- ❑ Need for the stronger MCS arrangements in FFA member zones to be mirrored on the high seas.



- ❑ Priorities for strengthening MCS are in the longline sectors – Monitoring & validating catch through supply chain key issue.
- ❑ Key priority is to strengthen catch monitoring and validation throughout supply chain.
- ❑ Strengthen transshipment monitoring and control.
- ❑ Ongoing monitoring & analysis of key metrics through more real-time analysis of key risks/trends and systematic collection and understanding of MCS data.

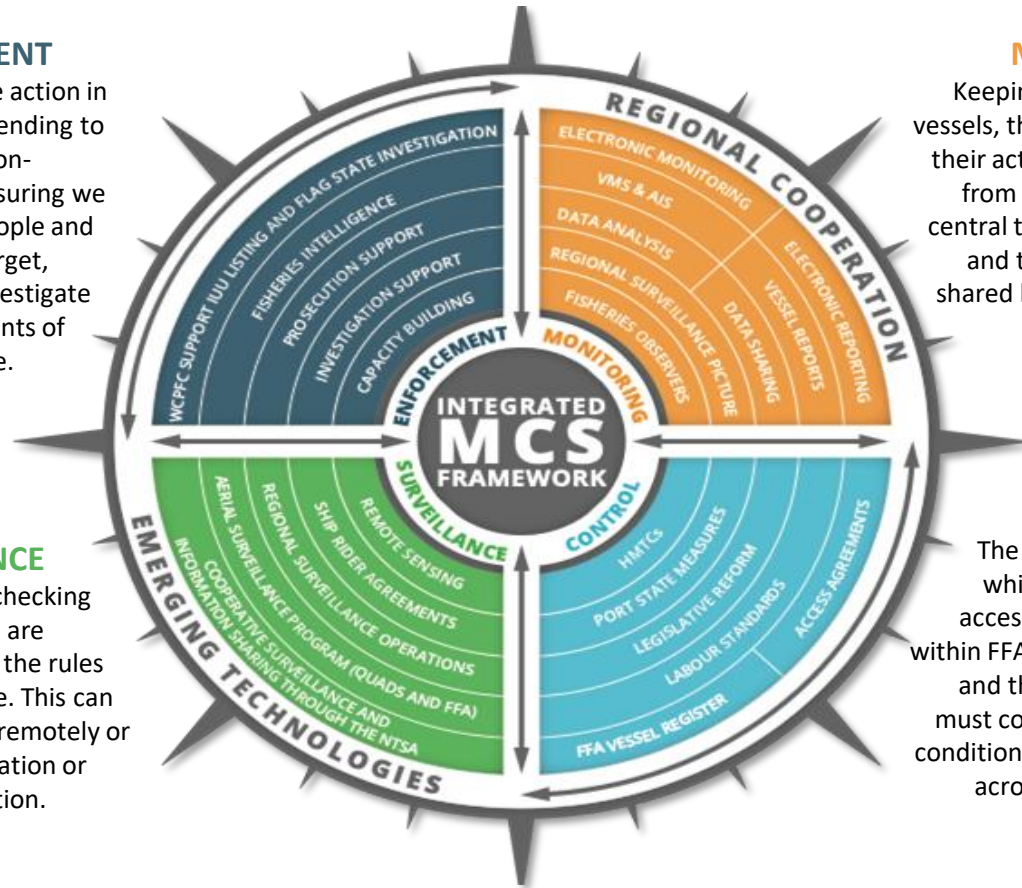
# Our Response

## ENFORCEMENT

Taking effective action in response to offending to deter further non-compliance. Ensuring we develop our people and processes to target, identify and investigate potential incidents of non-compliance.

## SURVEILLANCE

Supervising or checking that the vessels are complying with the rules that are in place. This can be undertaken remotely or through observation or physical inspection.



## MONITORING

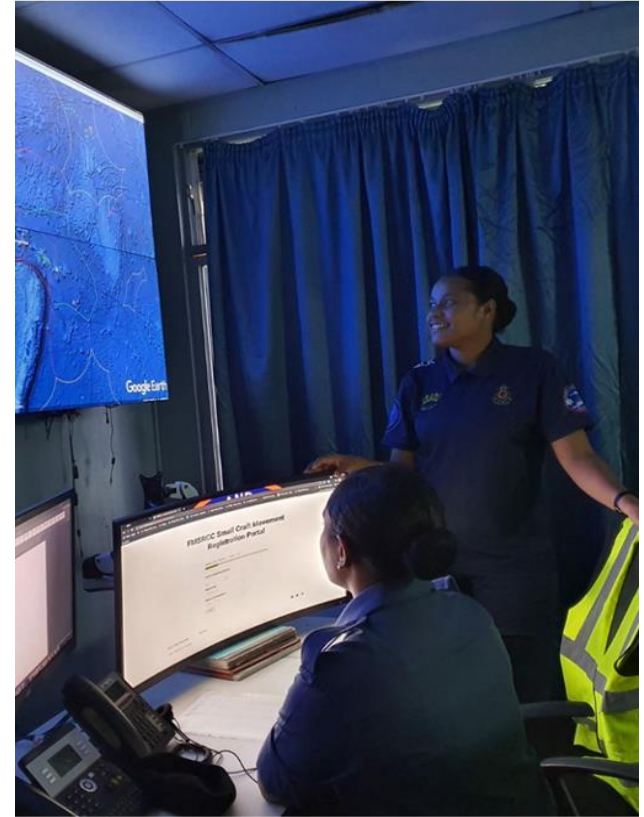
Keeping track of fishing vessels, their locations and their activities. Reporting from onboard vessel is central to this monitoring and the information is shared between FFA and Members.

## CONTROL

The conditions under which fishing vessels access the tuna fishery within FFA Member waters and the rules that they must comply with. These conditions are harmonised across FFA Members' waters.

# Cooperative Arrangements to Combat IUU

- FFA Regional Vessel Register
- FFA Vessel Monitoring System
- Niue Treaty and Niue Treaty Subsidiary Agreement
- Harmonised Minimum Terms and Conditions
- Regional Observer Programme
- FFA Regional Port State Measures Framework
- FFA Regional Catch Documentation Scheme Framework
- Regional Aerial Surveillance Program
- Regional Fisheries Surveillance Centre
- Regional Fisheries Surveillance Operations



# Our Success, Challenges & Opportunities



Strong **collaboration**  
and **cooperation**



Develop **capacity**  
amongst our  
people



Focus on  
**continual**  
**improvement**



Supporting **regional**  
and **national**  
implementation



**Integrated MCS** using a  
broad suite of  
compatible tools



**Data, information**  
**sharing** and **availability**  
across membership



**Clear strategy** for  
regional MCS  
priorities



**FFA**  
PACIFIC ISLANDS  
FORUM FISHERIES  
AGENCY

**Thank you**

---

More information: [www.ffa.int](http://www.ffa.int)